

# APPALACHIAN

LANDSCAPE CONSERVATION COOPERATIVE

Winter 2013

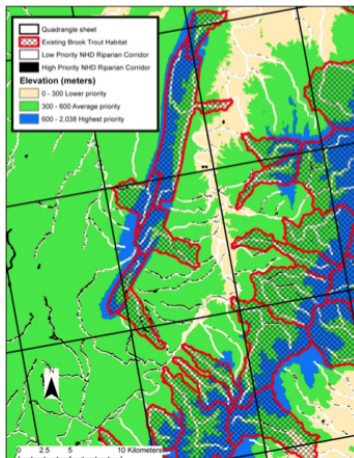
*Our Winter Newsletter details recently funded projects, launch of our new community web portal, activities in support of regional partnerships, and more.*



LANDSCAPE CONSERVATION  
COOPERATIVES

**APPALACHIAN LANDSCAPE  
CONSERVATION COOPERATIVE**

1900 Kraft Drive Suite 250  
Blacksburg, VA 24061  
communications@applcc.org



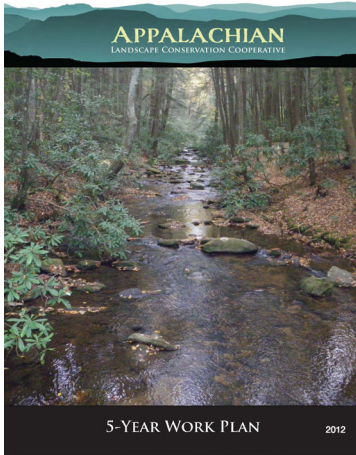
## Supporting Research and Conservation Delivery

### New Project will Develop Web-based Tool for Riparian Restoration in Eastern U.S. Streams

Increased water temperatures from climate change can greatly impact species distribution and abundance in streams. By restoring riparian shade, managers can create more resilient ecosystems by reducing the potential impacts of higher stream temperatures to species like the Eastern Brook Trout. At the Appalachian LCC Interim Steering Committee (ISC) Meeting on October 4th, members voted to fund the creation of a web-based tool that can rapidly identify high riparian restoration targets. This new tool will allow resource managers to identify un-forested riparian streams to restore shade to these environments and mitigate temperature increases due to climate change. Once complete, the tool will be linked to both the Appalachian LCC and Eastern Brook Trout Joint Venture web portals. The tool will also be integrated with ongoing stream temperature monitoring and modeling efforts. Dr. Keith Nislow, Research Fisheries Biologist with the U.S. Forest Service, is the Principal Investigator developing the tool.

Learn more about the Riparian Restoration project.

<http://applcc.org/projects/riparian-restoration>



## 5-Year Work Plan Addresses Landscape Conservation Goals, Objectives, and Actions to sustain the Appalachians

The Interim Steering Committee (ISC) recently approved the Appalachian LCC 5-Year Work Plan. The Work Plan was developed to help achieve the Cooperative's mission and effectively guide collaborative efforts in conservation planning and coordinated delivery that are necessary for success. The document reflects the Appalachian LCC's priorities, identifies key conservation targets, and details opportunities for coordinated efforts to deliver science products and tools to members, partners, and stakeholders. It will be implemented through the guidance of members on the ISC who represent federal, state, tribal, and NGO organizations in the region and is centered on the Cooperative's four main goals:

Read the full Work Plan here.  
<http://applcc.org/our-work/5-year-work-plan>

1. Creating a landscape-level data sharing strategy and scalable toolset
2. Delivering landscape-level conservation plans for regional use
3. Creating an on-going process to promote engagement and dialogue across the region
4. Aligning conservation goals and actions that reflect our members' vision and aligns closely with other regional and nationally recognized conservation framework such as the USFWS "Strategic Habitat Conservation"

## Engaging Our Community

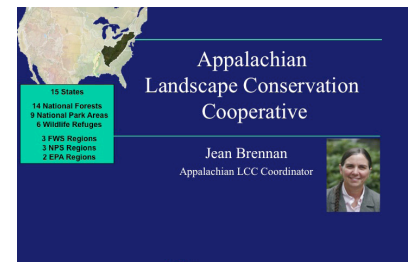
### Appalachian LCC and Eastern Brook Trout JV Launch New Community Web Portals

The Appalachian LCC Community Web Portal was launched on October 2nd as a platform for the conservation community to use in coordinating work products, disseminating information, and developing tools for on-the-ground conservation delivery. This new Content Management System allows members to communicate with colleagues, upload and store data, and join private workgroup spaces to share preliminary data and products. It will also provide up-to-date news and information about the Appalachian LCC's work, ongoing projects, new products, and publications. While developing this web portal, the Appalachian LCC Communications staff also worked with the Eastern Brook Trout Joint Venture (EBTJV) in creating a companion website with an identical web platform and similar functions tailored to the needs of the EBTJV community. The Appalachian LCC is now working with the Southeast Aquatics Resources Partnership (SARP) to develop a companion site similar to the EBTJV Web Portal.

Browse our website and become a member.  
<http://applcc.org/>

### Presentation on Recent Accomplishments and Future Direction

Coordinator Jean Brennan gave a webinar presentation on recent accomplishments and the future direction of the Appalachian LCC to the National Park Service (NPS) Natural Areas Team on October 18, 2012. Such talks update partners of the work and coordination led by the Appalachian LCC and allows for input from critical member organizations that inform the future direction of the Cooperative. Jean's presentation detailed how the Cooperative has developed top science needs in the regions and is funding key conservation projects to address these research needs. Jean also discussed the launching and use of the new community web portal as well as the development and approval of the 5-Year Work Plan. The presentation was a follow up to an original briefing given to the NPS in January 2011.



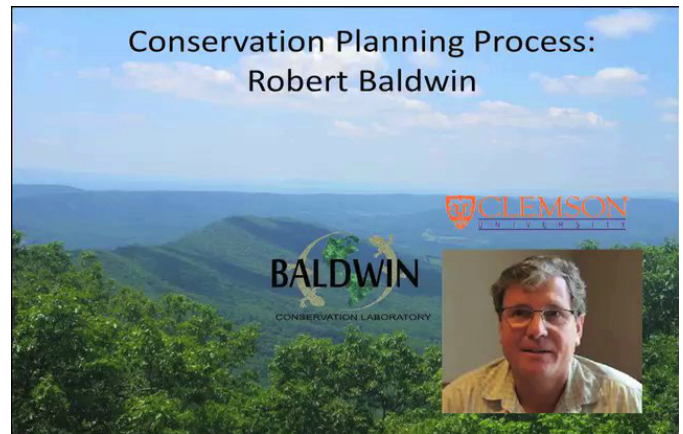
View the presentation here: <http://applcc.org/resources/>

## Conservation Planning

### Video Details Conservation Planning Process and Model

Working with Conservation Biologist Dr. Robert Baldwin of Clemson University, the Appalachian LCC staff created an informational video that explains the steps involved in the conservation planning process. In the video, Baldwin provides an overview while the conservation planning model and process is being built and presented to the viewer step by step. Conservation planning identifies and prioritizes lands that encompass important natural or cultural resources across the landscape – such as critical watersheds or habitat for rare and threatened species - and develops protection and management strategies for these lands. This video serves as a valuable resource for Appalachian LCC partners to guide future efforts in developing landscape-level planning that addresses the conservation challenges for the Appalachian region.

View video: <http://applcc.org/resources/holdings/webinar-videos/conservation-planning-process/conservation-planning-process-video>



## Awards and Recognition

### Appalachian LCC Chair Receives Prestigious Conservation Award

David Whitehurst, Chair of the Appalachian Landscape Conservation Cooperative (LCC) Steering Committee and Director of the Bureau of Wildlife Resources at the Virginia Department of Game and Inland Fisheries (DGIF), received the Clarence W. Watson Award for his tremendous service to resource conservation. Whitehurst has 40 years of experience as a fish and wildlife biologist, spending the last 38 years in the Commonwealth of Virginia. During this time, he was instrumental in bringing science-based management to the Commonwealth's fisheries and wildlife conservation programs. This award is the highest conservation honor given in the southeastern U.S. and recognizes the individual who has made the greatest contribution to wildlife or fish conservation. It was presented at the 66th Annual Conference of the Southeastern Association of Fish and Wildlife Agencies held in Hot Springs, Arkansas on Oct. 9th.

Read more.

<http://applcc.org/news/appalachian-lcc-chair-david-whitehurst-receives-southeasts-most-prestigious-conservation-award>







## Building the Cooperative - Supporting the Members

### Appalachian Mountains Joint Venture

The Appalachian LCC has been working closely with the AMJV to communicate on recent activity and develop ways to integrate work and resources. Both organizations are pleased to have many of the same Board Members who provide their conservation expertise and experience in guiding the partnerships. Communication Specialist Matthew Cimitile is joint-funded between the Appalachian LCC and the AMJV and provides regular updates to both organizations on current work, developments, and recent meetings. While Appalachian LCC Coordinator Jean Brennan and AMJV Coordinator Todd Fearer meet for monthly lunches to formulate ways to integrate data and activities that further enhance both partnerships. By communicating regularly and finding ways to integrate shared resources, these regional partnerships are coordinating effective, efficient conservation for all wildlife at the landscape level.

Learn more about the AMJV. <http://amjv.org/>

### Eastern Brook Trout Joint Venture

Eastern Brook Trout Joint Venture Logo Along with developing a companion website the Appalachian LCC is further coordinating with the EBTJV to host and disseminate vital data sets to the conservation community. The Appalachian LCC is beginning this process by hosting large research datasets that were developed by Dr. Mark Hudy, Senior Science Advisor - Fisheries, U.S. Geological Survey, with support from the EBTJV. This work is fulfilling a great need for resource managers, who require large dataset storage support and easy access to the information. The data will be used to create derivative products such as decision support tools to help Appalachian LCC partners identify geographic areas where conservation activities would have the greatest effect, select the appropriate management strategies, and improve coordination and prioritization among partners.

Learn more about the EBTJV. <http://easternbrooktrout.org/>



## New Items on Appalachian LCC Web Portal

- **2013 Climate Leadership Conference - Event**  
<http://applcc.org/events/2013-climate-leadership-conference>
- Partnership Celebrates Successful Conservation of Rugged West Virginia Forest - News  
<http://applcc.org/news/partnership-celebrates-successful-conservation-of-rugged-west-virginia-forest>
- Freshwaters Mussels of the Powell River, Virginia and Tennessee - Scientific Publication  
<http://applcc.org/resources/holdings/freshwater-mussels-of-the-powell-river-virginia-and-tennessee-abundance-and-distribution-in-a-biodiversity-hotspot/view>
- Appalachian LCC Boundary and Resource Maps  
<http://applcc.org/the-cooperative/appalachian-lcc-map-products>